

Solutions for a  
better supply chain

**CHEP**  
A Brambles Company





# Every piece of the supply chain covered

We're proud to say the CHEP equipment pool contains the industry's widest range of plastic and wooden platforms. But we're about more than just pallets – every platform we supply is a gateway to specialist solutions that help you run a smarter, more sustainable supply chain.

We work closely with our customers to solve supply chain challenges and find new ways to move goods more effectively. With our network helping manufacturers and suppliers reach more major retailers than any other supply chain company, these businesses are seeing real commercial results.



Contents	
Our solutions and approach	4
Platform solutions	6
First mile solutions	12
Store solutions	16
Retailer acceptance	20
Solutions overview	22
Transport solutions	24
System solutions	28
On-site solutions	32
Sustainability solutions	36

# Our solutions and approach

## Solutions

We work with a wide range of customers across the supply chain every day. Our ecosystem of related products and services will help you reduce costs, increase revenue and be more sustainable.

Platform Solutions	System Solutions	On-Site Solutions	Store Solutions	Transport Solutions	Sustainability Solutions
<div>+ Pallets</div> <div>+ RPCs</div> <div>+ Containers</div> <div>+ Custom</div> <div>+ International</div>	<div>+ Platform Mix Optimisation</div> <div>+ GPS Tracking</div> <div>+ Promotional Tracking</div>	<div>+ On-site Services</div> <div>+ Waste Management Solutions</div> <div>+ Automated System</div>	<div>+ Merchandising</div> <div>+ Replenishment</div>	<div>+ Collaborative Transport</div> <div>+ Horizontal Collaboration</div> <div>+ Transport Sourcing</div>	<div>+ Carbon Neutral Platforms</div> <div>+ Collaborative Safety</div> <div>+ Food Waste Reduction</div>



Reduce Costs



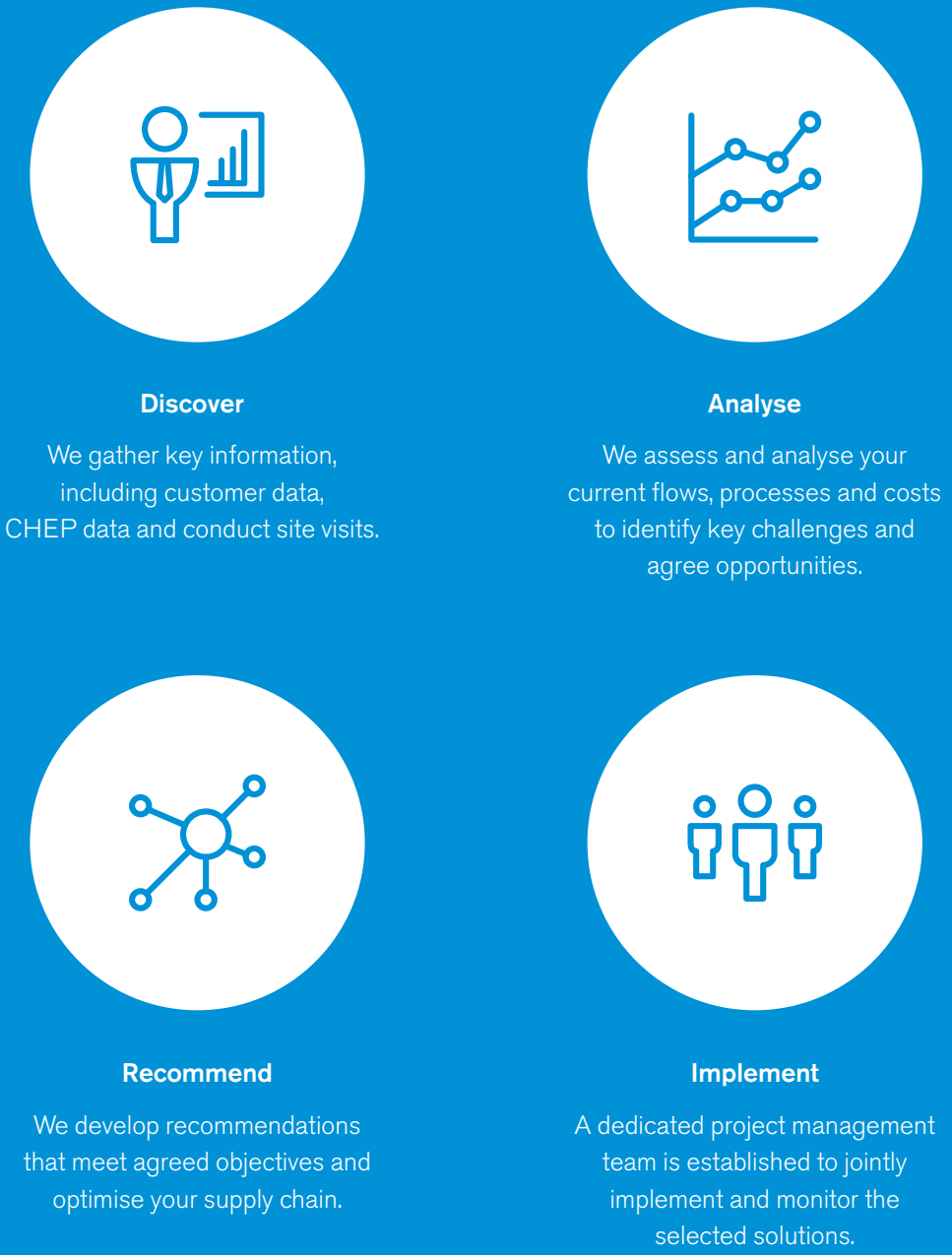
Increase Revenue



Be More Sustainable

## The CHEP approach

Our process consists of four key phases, tailored to the task in hand:





## Platform solutions

“ The robustness of CHEP's equipment is now vital to the efficiency and safety of all our processes.  
José María Sánchez, Industrial and Logistical Director, Casbega

The CHEP equipment pool is not just the biggest of its kind, but the most varied too. Our broad range of platforms, from full size wooden and plastic pallets to plastic trays and containers, is designed to suit every type of supply chain.

Our rigorous inspection and repair procedures mean we guarantee high quality platforms, lasting up to ten times longer than standard white wood pallets. And with 220 service centres across 35 countries in Europe, availability is never an issue.

With CHEP, you'll always get the equipment you need, in the right quantities and at the right time.

### Commercial Guidelines

Platforms are subject to standard activity based pricing (volume discounts may apply). Pricing schedule available on request.

Custom pallets are subject to conditions. Bespoke pricing will apply, based on individual customer requirements.





# Platform solutions

## What is it?

Brambles new and existing platform offerings: pooled, fractional, international and custom pallets.

## Why are we positioned to help?

We enable the shared use of high quality standard platforms through the entire supply chain. CHEP owns and manages 500 million units globally.

## How will you benefit?

Our broad array of quality platform solutions can help you achieve better efficiency with less environmental waste and product damage, more impact at shelf and better deployment of labour.

## Is it suitable for you?

- + Do you purchase loose equipment due to growth or attrition (loss/damage)?
- + Do you receive a high proportion of poor quality equipment inbound, which causes problems (product damage, re-work, waste costs or health and safety risks)?
- + Does your company have goals linked to reducing its environmental impact?
- + Can you replace loose equipment/ cardboard with a standard platform?
- + Do you have challenges controlling equipment within an open network or supply chain?

## Related information:

- If you do not use loose equipment directly, you may still benefit, if the other conditions are applicable.
- If you have significant volumes of non-standard bespoke equipment – we may be able to advise on a standard.
- If control of equipment is a problem, we may be able to support using our asset management expertise or software.




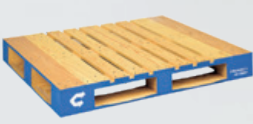







Core  
platforms



Our general-purpose, reusable wooden pallets are ideal for the loading, distribution and display of goods. Each one benefits from robust block construction and is fully compatible with standard handling equipment. Our pallets are rigorously inspected and tested for quality and safety.

CHEP code	B1210A	B1208A	B0806A	B4840A
				
Name	UK standard pallet	Euro pallet	Half Pallet	USA standard pallet
Certifications	FSC & PEFC certified sustainable timber	FSC & PEFC certified sustainable timber	FSC & PEFC certified sustainable timber	FSC & PEFC certified sustainable timber
SAP code	1	3	8	4055
L x W x H (mm)	1200 x 1000 x 162	1200 x 800 x 144	800 x 600 x 163	1219 x 1016 x 142
Material	Wood	Wood	Wood & Metal	Wood
Nominal weight	28kg	25kg	13kg	29kg
Safe working load	1500kg	1000kg	500kg	1270kg
Safe static load	6000kg	4000kg	2000kg	4535kg

P1210B	P1208A	P1208B	P0604B	D0604C	Beverage Tray
					
Plastic Standard	Plastic Euro	Plastic Euro	Plastic Quarter	Wheeled Quarter	Bev. Tray
ISO 8611-1991, JISz 0606 & ASTM D1185-94	ISO 8611-1991, JISz 0606 & ASTM D1185-94	ISO 8611-1991, JISz 0606 & ASTM D1185-94	ISO 8611, ISO 2234, ISO 6780 & ISO 2248	EN 12674, ISO 8611-1/2/3, ISO 22878:2004, ISO 2234, ISO1053, ASTM 4728 & ISTA 3E	ISO 8611, ISO 2234, ISO 6780 & ISO 2248
77	76/1119	76/1120	116	6043	3001
1200 x 1000 x 160	1200 x 800 x 160	1200 x 800 x 160	600 x 400 x 140	600 x 400 x 168	800 x 600 x 77
Plastic	Plastic	Plastic	Plastic	Plastic & Wheeled	Plastic
22kg	19kg	22kg	1.9kg	5.7kg	2.6kg
1750kg	1250kg	2000kg	250kg	250kg	800kg
5000kg	5000kg	5000kg	800kg	250kg	



# First-mile solutions

With a leading range of high quality plastic platforms, our first-mile solutions ensure optimum performance and adherence to the BRC Global Standard for Food Safety.

## What is it?

Plastic platform offerings: pooled, extended hire or in closed-loop circuits.

## Why are we positioned to help?

We enable the shared use of high quality standard platforms through the entire supply chain. CHEP owns and manages 500 million units globally.

## How will you benefit?

Our range of quality plastic platform solutions can help you service your customers, while adhering to the BRC Global Standard for Food Safety.

“CHEP continuously provides good and clean plastic pallets, which is very important for us. Deliveries are reliable and on time, even on very short notice. Costs are transparent and clear.

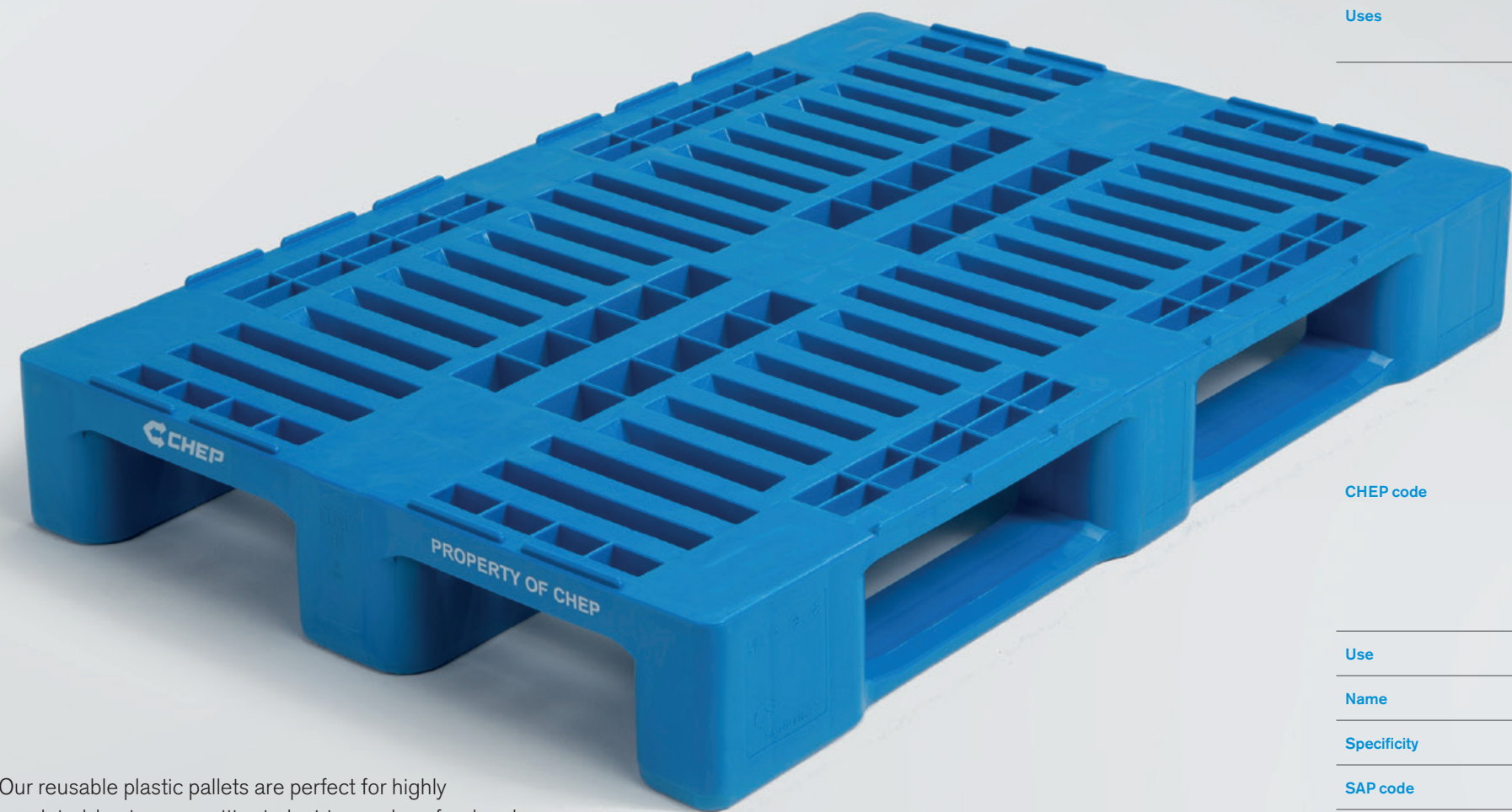
Yasar Kadir, Production Planning & Logistics,  
Vandemoortele Deutschland GmbH

## Is it suitable for you?





- + Do you send ingredients, raw materials or packaging into manufacturers?
- + Do you receive ingredients or other materials that move directly into food processing areas?
- + Do you operate a closed loop in the supply of raw materials to the food manufacturing industry?
- + Can you control equipment within an open or closed network?
- + Do you have a requirement for high quality plastic pallets in your supply chain?



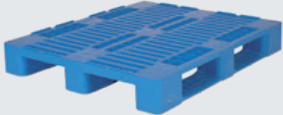






Our reusable plastic pallets are perfect for highly regulated, hygiene-sensitive industries such as food and pharmaceutical manufacturing. Made from heavy-duty plastic, they are water-resistant and have a non-porous surface that resists acids, fats and odours.

CHEP name	Ultra 1000	Autoflow 1000	iCONIC	Dricon
				
CHEP code	4470	4506	4440	6520 (unit) / 6521 (lid)
Use	Liquid	Liquid	Liquid	Dry
External Dimensions (mm)	1155 x 1155 x 1132	1200 x 1000 x 1150	1200 x 1000 x 1180	1200 x 800 x 805
Volume	1044 litres	1000 litres	1040 litres	565 litres
Weight	89kg	165.5kg	100kg	45.2kg
Uses	Non-hazardous liquids incl. dairy products, cosmetics, paints & food dyes	Non-hazardous liquids incl. dairy products, cosmetics, paints & food dyes	Non-hazardous liquids incl. dairy, oils, fragrances & pharmaceuticals	Caps, powder, component parts & pre-forms

See our product catalogue or speak to your CHEP rep for our full range of Pallecons

CHEP code	P1210B	P1208A	P1208B
			
Use	Ingredients	Ingredients & Replenishment	Ingredients & Replenishment
Name	Plastic Standard	Plastic Euro	Plastic Euro
Specificity	Non-Perimetric with top deck lips	Non-Perimetric with top deck lips	Non-Perimetric without top deck lips
SAP code	77	76 / 1119	76 / 1120
L x W x H (mm)	1200 x 1000 x 160	1200 x 800 x 160	1200 x 800 x 160
Material	Plastic	Plastic	Plastic
Nominal weight	22kg	19kg	22kg
Max. load capacity (racking / dynamic / static)	1450kg / 1750kg / 5000kg	1000kg / 1250kg / 5000kg	1450kg / 2000kg / 5000kg
Stack height (yard / truck)	32 pal / 16 pal	32pal / 16 pal	32 pal / 16 pal
Max. stacks per truck	26	33	33
Total platforms per truck	390	495	495
Height	2.40m	2.40m	2.40m



# Store solutions



Supply chains are evolving to meet the demands of today's highly savvy, convenience-loving shopper. Our store solutions are designed to help you maximise sales in the face of changing consumer habits.

## Merchandising

### What is it?

Identify and implement new platforms designed to display goods better and increase sales.

### Why are we positioned to help?

We've helped hundreds of retailers around the world successfully integrate retail-ready display units and consumer-facing platforms into their store merchandising mix. We have the know-how and breadth of platforms to make your operations more efficient and grow your sales and profit.

### How will you benefit?

Our merchandising solutions can help you display your goods more effectively and lead to increased sales.

### Is it suitable for you?

- + Are you looking to improve the way your goods are displayed in store?
- + Do you want to improve the visibility of your in-store promotions, and gain a sales uplift?
- + Are you looking to change the way you deliver goods to store?

## Store replenishment

### What is it?

Identify and implement new platforms designed to reduce touches and increase efficiency of moving products to the point of purchase.

### Why are we positioned to help?

As with our merchandising solutions, we've helped hundreds of retailers successfully integrate retail-ready display units and consumer-facing platforms into their store merchandising mix.

### How will you benefit?

Our Store Fulfillment solutions can help you get product on shelves quicker and more efficiently, meeting the expanding demands of multiple store formats.

### Is it suitable for you?

- + Do you want to reduce the number of handling touch points throughout your supply chain?
- + Do you want to make it easier to get product onto the shop floor?
- + Are you looking to change the way goods are delivered?

“ The increase in sales and time saved compared to placing products on shelves is remarkable. CHEP Quarter pallets were also shown to provide better stock control in the stores, reducing stock-outs.

Efren Pareja, Category Manager, AhorraMas

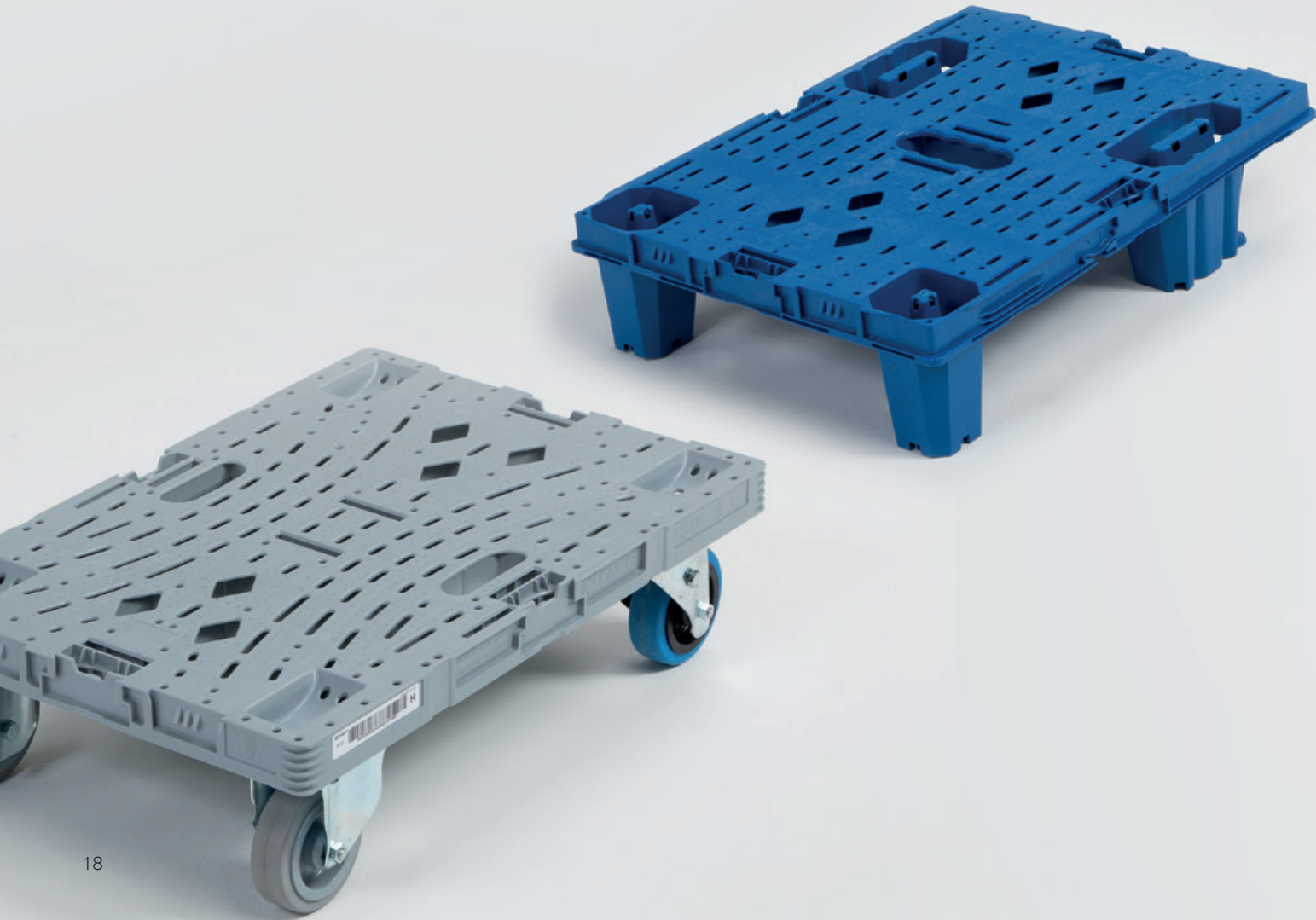








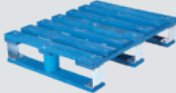


Store solutions



The CHEP equipment pool contains a range of platforms that are ideal for in-store display, maximising sales opportunities and making replenishment easy. We also have trays and containers to meet every supply chain requirement.



CHEP name	Bale Arm	Green Plus	Banana Tray	Meat Lift Lock
				
Size	Various sizes	Various sizes	Various sizes	Various sizes
Maximum load	10 – 25kg	5 - 20kg	17.6 - 18.8kg	10 - 18kg
Usable temperature range	-30 degrees – +36 degrees	-10 degrees - +60 degrees	-10 degrees - +60 degrees	-30 degrees – +45 degrees
Usage	Optimised for fruit and vegetables	Used for fruit, vegetables, meat, eggs & bakery products	Optimised for bananas	Optimised for fresh and frozen meat
Additional information	UV resistant and food safe	UV resistant and food safe	UV resistant and food safe	UV resistant and food safe

CHEP code	B0806A	P0604B	D0604C	Beverage Tray
				
Use	–	Replenishment & Display	Replenishment & Display	Replenishment & Display
Name	Half Pallet	Plastic Quarter	Dolly	Bev. Tray
Specificity	–	Nestable Display platform with BlueClick Technology	Wheeled Display Dolly	Stackable & Nestable
SAP code	8	116	6043	3001
L x W x H (mm)	800 x 600 x 163	600 x 400 x 140	600 x 400 x 168	800 x 600 x 77
Material	Wood & Metal	Plastic	Plastic & Metal	Plastic
Nominal Weight	13kg	1.9kg	5.7kg	2.6kg
Safe working load	500kg	250kg	250kg	800kg
Stack height (yard/ truck)	40 pal / 15 pal	Max. 25 pal high	12 dollys (manually pushed) 8 dollys (forklift)	37 trays
Max. stacks per truck	64	5 stacks of 25 per 1210 pallet 26 x 1210 stacks per truck	5 stacks of 15 dollys per 1210 pallet	64
Total platforms per truck	960	3250	1950 dollys per truck	2368 trays
Height on truck	2.45m	1.62m	2.34m	2.01m



## Retail acceptance: Opening more doors for your business



We've spent many years developing strong relationships with leading retail businesses. Today, no other pallet provider is accepted by as many major retailers in the UK.

For our customers, this means they reach more stores with their products and streamline the use of platforms within their supply chain – there's no need to use different pallets when delivering to different stores. The savings are significant.



## Solutions for companies on a quest to improve



“CHEP is more than a pallet company... They act more like a facilitator between retailer and supplier, joining forces with our entire team to find ways to make the supply chain work better for us all.

Alan Abraham, Warehouse Manager, Henderson Group

If you're striving to increase efficiency, boost product availability or achieve greater sustainability in your supply chain, our experts can help.

We've been working to solve supply chain challenges in 54 countries for the last 60 years, and we're good at identifying emerging trends too. Every time you share a CHEP pallet, you tap into this pool of knowledge and expertise. For specific supply chain challenges, we offer specialist solutions.

Like you, we're constantly aiming to improve. Every solution we provide today has been shaped by our collective thinking and effort, in collaboration with forward-thinking customers, to build smarter, leaner and more sustainable supply chains.

### Commercial Guidelines

Bespoke commercial terms will apply, based on individual customer requirements. Please speak to your account manager to find out more.





Cutting needless CO<sub>2</sub> emissions and eliminating empty truck miles – our transport solutions use the scale of the CHEP network to help your supply chain run better.

**Collaborative transport**

**What is it?**

We make use of customers' empty transport to move CHEP platforms to or from a CHEP facility or to another customer location.

**Why are we positioned to help?**

Our network includes more than 17,000 customer locations, 221 CHEP facilities and 47,000 unique lanes throughout Europe. We can utilise empty vehicles to move empty pallets in the opposite direction to the goods.

**How will you benefit?**

We help you optimise your transportation networks, reducing costs and fulfilling your commitments to sustainability.

**Is it suitable for you?**

- + Do you have under-utilised vehicles (empty legs)?
- + Do you own or subcontract a fleet?
- + Does your company have a commitment to sustainability?

**Transport sourcing**

**What is it?**

Obtain secure competitive transport rates through CHEP's tender management expertise, tools and broad network.

**Why are we positioned to help?**

We have insight into customer flows from more than 14 million shipments in 224,000 lanes annually – the equivalent of more than 56,000 full truckloads per day. Finding and negotiating the best possible rates for hauling freight is one of our core skills.

**How will you benefit?**

You'll be able to benchmark your current transport costs against the market and identify transport saving opportunities.

**Is it suitable for you?**

- + Do you have the ability to re-tender your transport rates?
- + Do you produce or ship products in ambient categories?
- + Do you make more than 100k products movements per year?

“ Working with CHEP simplified our logistics processes and gave us cost optimisation.

Leszek Rodak, Sales and Marketing Director, Polska Woda







## Horizontal collaboration

What is it?

We identify and facilitate synergies between customers to help reduce empty or excess miles.

Why are we positioned to help?

We use our own data and customer data to identify synergies between customers. We've collaborated with more than 130 customers across Europe as a neutral partner and can offer support for implementation.

How will you benefit?

You'll optimise your transportation networks, reduce costs and fulfil your sustainability commitments.

Is it suitable for you?

- + Do you have under-utilised vehicles (empty legs)?
- + Do you have to supply part loads to your customers?
- + Has your company committed to reducing its carbon footprint?







Technology is transforming supply chains around the world. Our system solutions combine the latest digital tools with hands-on supply chain expertise to effectively pinpoint inefficiencies, reduce waste and lower operating costs.

**GPS tracking**

**What is it?**

GPS tracking uses a mobile app to keep control of delivered and exchanged equipment/platforms between a DC and stores. Real-time stock balances of CHEP and/or customer owned equipment can be maintained.

**Why are we positioned to help?**

CHEP will tailor the system you need to protect your high-value platforms.

**How will you benefit?**

Our tracking systems will ensure you operate a more efficient supply chain by helping you to pinpoint inefficiencies, reduce waste and conserve resources.

**Is it suitable for you?**

- + Are you looking to protect your most valuable distribution platforms and products?
- + Are you looking to identify where losses and damages occur and accurately attribute related costs?
- + Do you want to reduce the potential for human error in tracking platforms and products?
- + Do you want to view real-time tracking information on your desktop or mobile device?
- + Do you want to better manage inventory from end to end?

“ Being able to tap in to the level of supply chain expertise that exists within CHEP is simply fantastic.  
Sarah Louise Fairburn, Brand Director, LJ Fairburn







## Promotional tracking

### What is it?

Beacon technology broadcasts to nearby electronic devices, such as a smartphone, via an app installed on the device (e.g. a loyalty card app).

### Why are we positioned to help?

CHEP can provide beacon technology within certain platforms as part of our Store Solutions offer.

### How will you benefit?

This solution can enable increased sales from more effective promotional execution, reduced costs related to promotional compliance checks and reduced product waste.

### Is it suitable for you?

- + Are you looking to target shoppers at point of sale via push notifications?
- + Are you looking to reduce field staff to monitor in-store promotional compliance?
- + Do you want to improve the visibility of your in-store promotions and understand promotional performance?
- + Do you want to reduce waste costs?

## Platform mix optimisation

### What is it?

Identify the right platform (CHEP or otherwise) to use for each leg of the supply chain, based on the products moved and destination being shipped to.

### Why are we positioned to help?

We work with many of the world's premier supply chains, learning more than anyone else about where, when and how to supply the optimal platform for a certain job without bias. In addition, we can offer the world's broadest selection of distribution platforms.

### How will you benefit?

The optimal mix of platforms will help you lower your total operating costs.

### Is it suitable for you?

- + Do you use a large range of platforms? We can rationalise your range.
- + Do you have access to a limited range of platforms? We can identify if they are suitable and find the optimal way to use them.
- + Has there been a change in demand from your customers? Are traditional platforms no longer the best fit?
- + Can you replace loose equipment/cardboard? Is the equipment you use driving an increase in costs?
- + Are you having to manual pick or replenish?
- + Do you have empty space on your vehicles?
- + Do you have to ship equipment with excess space?

“ Digitalisation is dramatically changing the in-store shopping experience, big data will make real-time connectivity with in-store promotions possible.

Christophe Loiseau, Senior Vice-President Europe, CHEP







We manage thousands of facilities and millions of pieces of equipment around the world. Our on-site solutions are designed to optimise your facility by improving operational efficiency and reducing costs.

## On-site services

### What is it?

We provide expertise and resources to efficiently manage customer operations such as empty pallets, yard management and container tipping.

### Why are we positioned to help?

We manage millions of pieces of equipment and thousands of vehicles and facilities across the globe. We already support our customers to reduce costs and increase efficiencies using our skilled Lean Six Sigma trained employees.

### How will you benefit?

By achieving increased efficiency and reduction in costs, as well as helping your people return maximum value by removing waste from their jobs and allowing them to focus on value adding activities.

### Is it suitable for you?

- + Do you have high or rising labour costs in your factory, warehouse or distribution centre?
- + Do you have on-site inefficiencies or waste?
- + Would you like to increase productivity?
- + Are you using third-party companies to manage or run your facilities and operations?

## Waste management

### What is it?

We identify and provide solutions to manage your waste efficiently, including cardboard and waste white pallets.

### Why are we positioned to help?

We manage several programmes globally to support customers in reducing waste costs and being more sustainable. We also have a zero-landfill policy.

### How will you benefit?

Our scale and expertise will help you identify new ways to reduce waste and associated costs.

### Is it suitable for you?

- + Do you have large amounts of on-site waste?
- + Do you have high or rising waste management costs?
- + Are your current waste management processes complex/ involving multiple parties?
- + Do you have targets to reduce the amount of waste you send to landfill?

“ The CHEP Total Pallet Management programme is very beneficial... we have gained more flexibility and optimised transport costs, as well as improved quality and efficiency in our operations.

Stéphane Guilbert, Logistics Director, Brüggen France







Automated systems optimisation

What is it?

We optimise your automated equipment and systems to work as well as possible, regardless of pallet design, type or specification.

Why are we positioned to help?

Our engineers have studied thousands of customer sites globally, which means we have unmatched insight and experience of how different automated systems interact with every type of pallet.

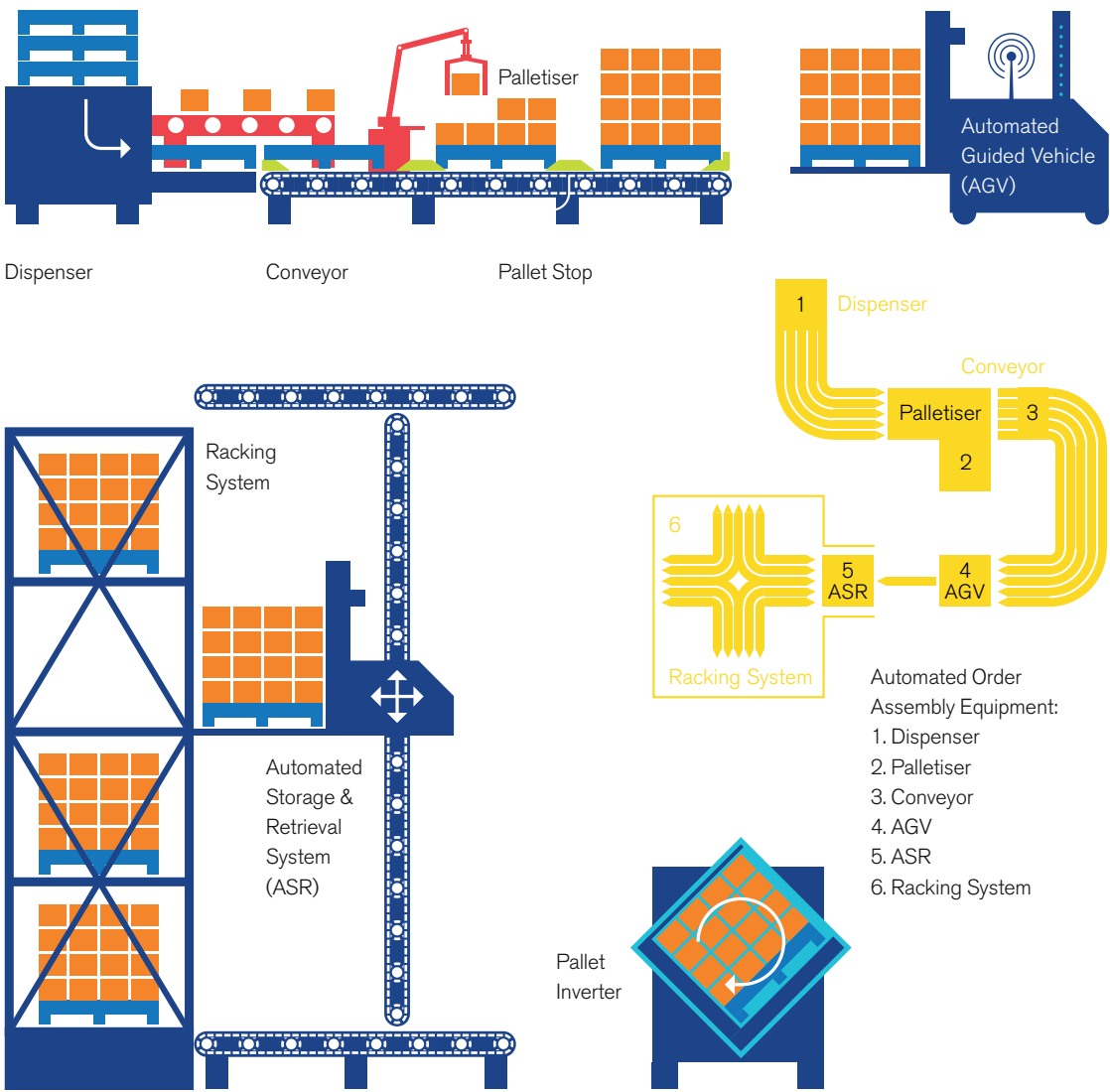
How will you benefit?

You can leverage our expertise with automated systems to proactively improve your operational efficiencies by fixing issues and preventing future problems.

Is it suitable for you?

- + Does your automated system currently reject large volumes of pallets?
- + Do you regularly experience downtime?
- + Have you recently installed a new automated system?
- + Have you started using a new pallet type or specification?
- + Do you have limited internal resources to fix or adapt your automated system?

How CHEP can help





# Sustainability solutions



## Sustainable business: Building a better world

The CHEP business model is inherently sustainable. Every time a CHEP customer chooses share and reuse platform solutions instead of one-way packaging, carbon emissions are reduced and raw materials are saved.

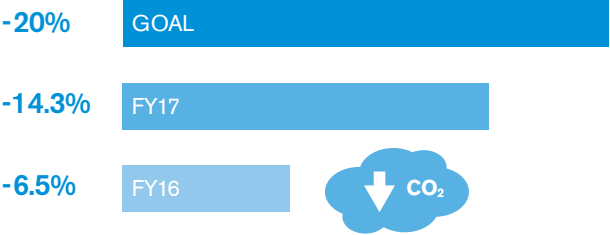
In 2017, our customers saved 2.5 million tonnes of CO<sub>2</sub>, preserved 1.6 million trees and avoided 1.4 million tonnes of waste by embracing the circular and sharing economy. CHEP, through our parent company Brambles, is consistently recognised as a leader on sustainability in our industry category.

“ Our partnership with CHEP is helping us achieve our 10-year sustainability goals.

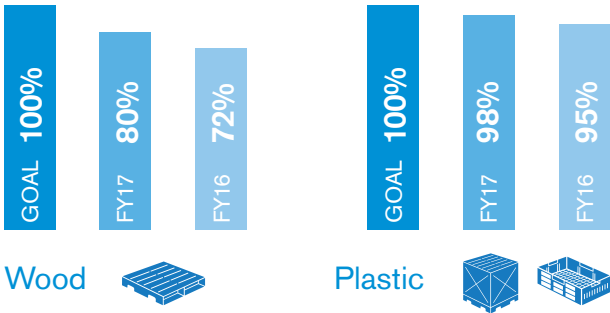
Michael Kloeffkorn, Head of Corporate Sustainability, Bahlsen

# Building a better world together

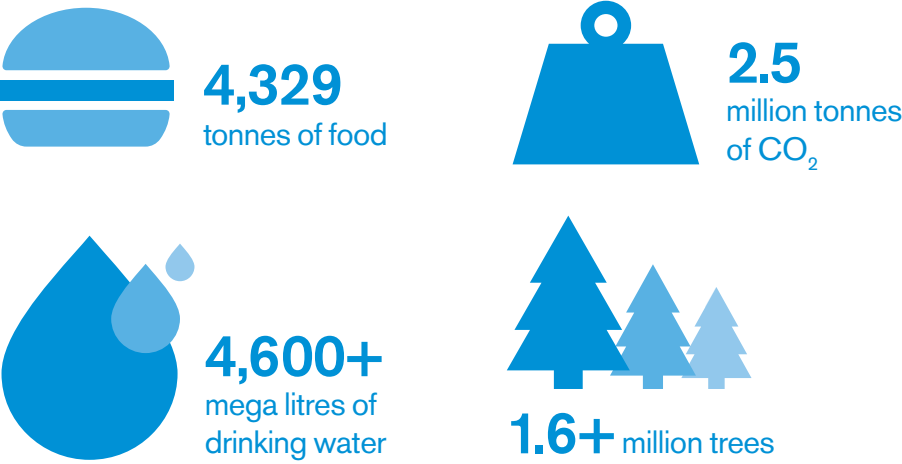
## Carbon reduction per unit delivered



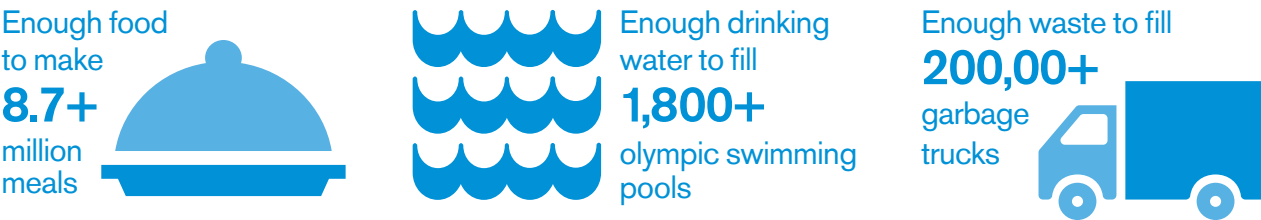
## Sites achieving zero waste



## Customers saved



## Equivalent to



CHEP's approach to sustainability is recognised worldwide:







Creating sustainable value is at the core of the CHEP network. We introduced the concept of sharing and reusing platforms more than 60 years ago, so helping customers to reduce their environmental impact is a key objective in all our solutions.

Food waste reduction

What is it?

At CHEP, we work with FareShare to promote the issue of food waste and encourage our customers to donate in-date surplus food to FareShare so they can support even more charities across the UK.

Carbon neutral platforms

What is it?

Calculate your carbon footprint using ISO 14044-compliant Life Cycle Analysis tools. Then we'll offer you a wide range of offset projects in different regions of the world that deliver both environmental and social impact.

Why are we positioned to help?

We're the only company to offer a carbon neutral platform programme that is not driven by profit. Last year, carbon neutral pallets offset 11,000 tonnes of customers' CO<sub>2</sub> emissions.

How will you benefit?

The CHEP carbon neutral platform programme maximises the use of the most sustainable platforms and decreases your environmental impact even further. And we'll make an extra effort to develop joint communications (internal and external) that promote your CSR achievements.

Is it suitable for you?

- + Are you underperforming against CO<sub>2</sub> emissions targets?
- + Are you committed to reducing your carbon footprint and supporting sustainability projects?

Collaborative safety

What is it?

Partner with CHEP to share best practices and identify safer ways of working.

Why are we positioned to help?

Health and Safety are essential parts of our core values. Our efforts have been recognised by the Royal Society for the Prevention of Accidents, which granted us the RoSPA Gold award for three consecutive years. In addition, our management system is OSHAS certified.

How will you benefit?

An empowered workforce with a safety focus will help to deliver a wide variety of business improvements.

Is it suitable for you?

- + Are you committed to driving Health & Safety improvements?
- + Do you face challenges with safety performance, or have a lack of safety targets?
- + Is a poor health & safety record costing you money?





Ready to transform your supply chain?  
Contact your CHEP rep for more details

CHEP UKI  
Village Way, The Village,  
Trafford Park,  
Manchester, UK  
  
T: 0161 786 0500  
CHEP.com

