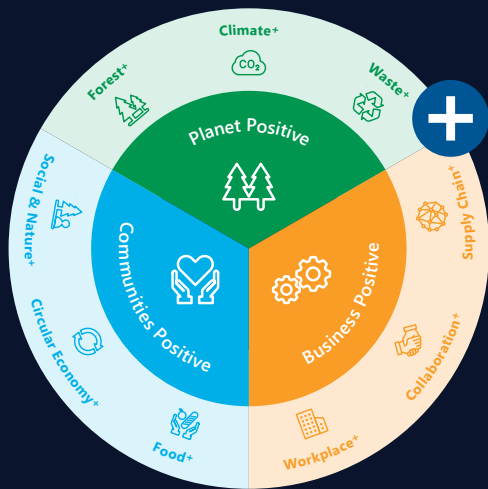


## SUSTAINABILITY HIGHLIGHTS 2024

# Advancing regenerative supply networks

Brambles' circular business model and ambitious 2025 sustainability targets are underpinned by our vision to pioneer a global regenerative supply networks. As we enter the last year of our 2025 sustainability targets and regenerative strategy (2021–2025), we remain committed to raising the benchmark on sustainability. We aim to provide innovative solutions, deliver value to customers, and create connections to make the world's supply networks more resilient and regenerative through our people, operations and technology.



**Brambles**

**CHEP**

A Brambles Company

### Business Positive

2.9

**Brambles Injury Frequency Rate**

Down from 3.8 in FY23

491

**customers participating in collaborative projects**

**89,244,077 kilometres and 96,002 tonnes CO<sub>2</sub>-e saved in FY24**

44.4%

**women on the Board**

37.5%

**women in leadership roles**

### Avoided environmental impacts in our customers' supply chains:

1,861

**kilotonnes of CO<sub>2</sub>-e**

Equivalent to carbon emissions produced by **242,600+ homes in the US in one year**

4,265

**megalitres of water**

Enough water to fill **1,700+ olympic swimming pools**

1.3

**megatonnes of waste to landfill**

Enough waste to fill **a garbage truck 179,000+ times**

2.2m

**m<sup>3</sup> of timber**

Enough wood to conserve **~2.3 million trees**

### Planet Positive

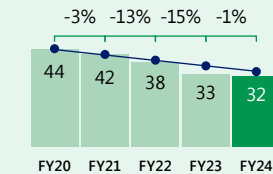
100%

**sustainably sourced timber**

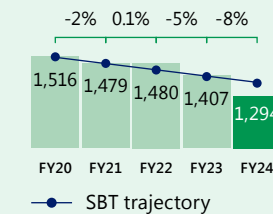
78.0% holding full Chain-of-Custody

Global emissions:

**Scope 1 and 2 (ktCO<sub>2</sub>-e)**



**Scope 3 (ktCO<sub>2</sub>-e)**



83.0%

**of locations with zero product waste to landfill**

82.9% of CHEP locations  
83.1% of outsourced locations

### Communities Positive

9.39m

**total community contributions (US\$)**

20.9% increase from FY23

20.6m

**people served rescued food through collaboration with food banks**

Surpassing our 2025 targets

1.3m

**people reached on the benefits of the circular economy**

Cumulative result since FY21

**Early adoption of nature-related disclosures under TNFD and climate-related disclosures with reference to IFRS S2**

## Positive Collaboration:

### The UK Refill Coalition with Aldi, GoUnpackaged, and other key partners

Established in 2020 by GoUnpackaged, the Refill Coalition is developing a standardised solution to deliver consumer refillables at scale. This solution helps reduce waste from single-use packaging. Via ZWW, CHEP brings the required knowledge and expertise in pooling to support development of the scalable refill model for the end-to-end supply chain.

Learn more at [The Refill Coalition](#)



## Asset Productivity:

### Brambles' Digital Strategy is enhancing its circular performance

Brambles' digital capabilities support asset productivity, customer experience, commercial decision-making, and development of new solutions to remove waste from customers' supply chains.

#### Total savings:<sup>1</sup>

<b>82,927</b> tonnes of CO <sub>2</sub> -e	<b>705,247</b> m <sup>3</sup> of timber	<b>417,040</b> tonnes of waste
---	--	-----------------------------------



An autonomous tracking device on one of our pallets

## Forest Positive:

### Partnering with WeForest for regeneration in Zambia

Brambles has consolidated its strategic partnership with WeForest, a non-profit organisation working to develop scalable and sustainable forest and landscape restoration projects that regenerate and conserve forests around the world. The partnership focuses on the development of three reforestation projects in Zambia.



Mafinga Hills (Zambia), © Ruben Foquet, WeForest

## Environmental, social and governance recognitions

Member of  
**Dow Jones Sustainability Indices**  
Powered by the S&P Global CSA

**1st**  
in industry category

**MSCI ESG RATINGS** **AAA**

Maximum **AAA** rating  
Top 10% of companies assessed in our industry category

**Corporate Knights**  
**GLOBAL100 2024**  
THE WORLD'S MOST SUSTAINABLE CORPORATIONS

**2nd**  
most sustainable company of ~6,700 analysed

**CDP**

Score of **A-**  
for both Climate Change and Forests

**TIME**  
**WORLD'S MOST SUSTAINABLE COMPANIES**  
2024

**4th**  
in the world's most sustainable companies in 2024

**top** GLOBAL EMPLOYER 2024  
CERTIFIED EXCELLENCE IN EMPLOYEE CONDITIONS

**Global Top Employer**  
Top Employer in 26 countries and four regions

<sup>1</sup> These estimated figures have not undergone assurance. Environmental savings are estimated from weighted average emissions per new pallet used in FY22 (5.17 kgCO<sub>2</sub>-e per pallet), and typical material requirements for a B1208A pallet. The emissions savings does not account for the additional transport to increase pallet recovery; such emissions are reflected in reported logistics emissions.