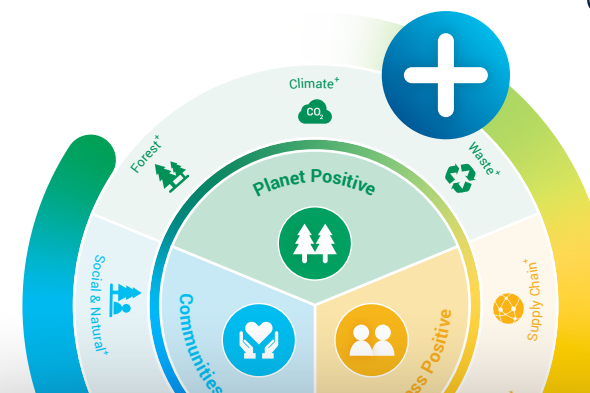


Brambles' 2025 Sustainability Targets

Brambles' roadmap to regeneration is articulated in our ambitious 2025 sustainability targets. Our 2022 performance against these targets is outlined below.



Planet Positive

Our commitment is to be Planet Positive by restoring forests, going beyond zero waste and drawing down more carbon than we produce, ultimately becoming a regenerative, nature positive business.

TARGET

UN SDG ALIGNMENT

FY22 PROGRESS

SINCE FY21



Forest Positive



- Enable the sustainable growth of two trees for every tree used
- 100% sustainable sourcing of timber
- Transformation of more forestry markets to Chain-of-Custody (CoC) certification

Sustainably sourced timber	100%	✓ Achieved
CoC sourced timber	72%	↑ 3 pts improvement
Trees replanted through certified sustainable forestry programmes	3,684,734	↑ 13.5% improvement
Trees planted in afforestation or reforestation projects	63,426 trees in over 6 countries	↓ 5% decrease ¹
CO ₂ -e sequestered from afforestation projects	31,625 tonnes	↓ 9% decrease ¹



Climate Positive



- SBTi verified climate targets for full value chain aligned to a 1.5°C degree climate
- 100% renewable electricity and all our operations will be carbon neutral by 2025

Carbon neutrality for operations (Scope 1 and 2 emission sources)	Achieved	✓ Achieved
Electricity from renewable sources ²	100%	✓ Achieved
Performance against SBT (includes scope 1, 2 and 3 emissions FY21 vs FY22) ³	1,480 ktCO ₂ -e	↓ 1.4% improvement



Waste Positive



- Zero product materials sent to landfills for all Brambles and subcontracted locations
- 30% recycled or upcycled plastic waste in plastic products

Number of Brambles new and next generation platforms containing recycled content ⁴	9	✓ Achieved
Brambles' total recycled plastic material purchased	14%	↓ 1 pt decrease ⁵
Percentage of plants diverting product waste from landfill: ⁵		
• Brambles managed plants	74%	↓ 2 pts decrease ⁷
• Third-party plants	55%	↑ 38 pts improvement
• All plants	58%	↑ 31 pts improvement

¹ Brambles is developing a medium term strategy for our afforestation and reforestation programme to increase impact and address nature, biodiversity and carbon sequestration opportunities.

² Brambles renewable electricity results include electricity from renewable contracts 31.4%, on-site Generation 1.2%, Energy Attribute Certificates (EACs) 55% and Voluntary Carbon Offsets (VCOs) 12.4%.

³ Brambles' SBT results covering FY20, FY21 and FY22 is available on page 25.

⁴ This datapoint is not assured

⁵ In FY22, Brambles expanded the scope of its Zero Product Waste to landfill measurement to include >95% of sites that handle Brambles assets.

⁶ Brambles' purchase of recycled material will increase as new product innovations are launched in FY23.

⁷ The small decrease in waste diversion at Brambles' managed plants is being addressed through regional decarbonisation plans.

Business Positive

Brambles will pioneer regenerative supply chains by improving our circular model every year, increasing the environmental benefits in our customers' supply chains.

Build a safe, inclusive and respectful workplace.

TARGET

UN SDG ALIGNMENT

FY22 PROGRESS

SINCE FY21



Supply Chain Positive



- Increase environmental benefits in our customers supply chains through circular model
- Co-develop circular measurement tools for industry and improve Brambles' circular performance

Increased our positive environmental impact across our customers' supply chains

2.5 m tonnes of CO₂-e

2.3% improvement

4,470 megalitres of water

7.3% improvement

3.2 m cubic metres of wood

0.1% improvement

3.1m trees

0.1% improvement

1.5 m tonnes of waste

1.7% improvement

Ellen MacArthur Foundation (EMF) Circulytics score¹ A-

Achieved



Positive Collaboration



- Double the number of customer collaborations through our Zero Waste World from 250 to 500

Customers in collaboration

370

25.4% improvement

Collaborative initiatives

1,488

6.9% improvement

CO₂-e saved

105,962 tonnes

5.7% decrease



Workplace Positive



- 25% reduction in BIFR
- At least 40% women in management roles

BIFR performance

4.1

18% improvement

Top Employer accreditation

Achieved in 21 countries and across four regions

Achieved

Women on the Board

40%

4 pts Achieved

Women in management roles

33%

1.4 pts improvement

TARGET

UN SDG ALIGNMENT

FY22 PROGRESS

SINCE FY21



Food Positive



- Collaborate with food banks to serve rescued food to 10 million people

People receiving meals through Brambles' support for food rescue organisations

16,216,021 globally

Achieved



Circular Economy Transformation



- Advocate, educate and impact one million people to become circular economy change makers

People reached through our communications, training and advocacy²

FY22: 504,305

Cumulative result since FY20: 599,464

Improvement



Positive Impacts for People and Our Planet

- Adopt leading natural and social capital accounting approaches

Brambles are reviewing the recently released Task Force for Nature-related Financial Disclosures V0.2 beta framework for applicability to our business. Brambles are also involved in the pilot testing phase of the Greenhouse Gas Protocol GHG Protocol Land Sector and Removals Guidance working group to understand accounting approaches for natural capital.

Communities Positive

Brambles' Communities Positive programme will build resilience, promote circularity and account for the connections between society, the economy and nature.

¹ Brambles also consulted with the World Business Council for Sustainable Development (WBCSD) on their Circular Transition Indicators (CTI) Tool.

² New baseline and methodology expanded measurement scope include social media and media release impressions.

³ Biogenic carbon refers to carbon that is sequestered from the atmosphere during biomass growth and may be released back to the atmosphere later due to combustion of the biomass or decomposition.